

PC-ADP

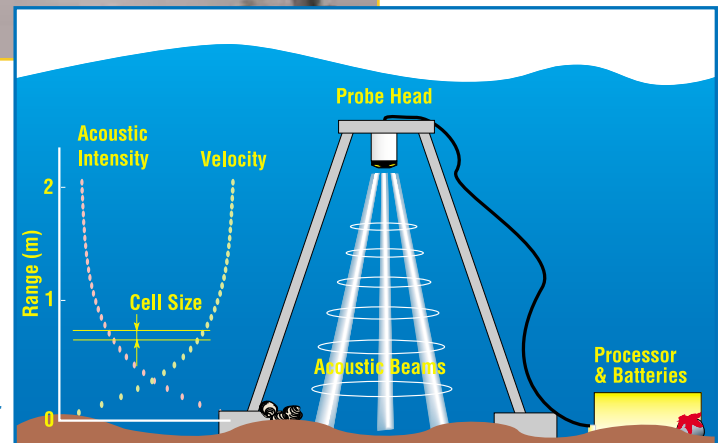
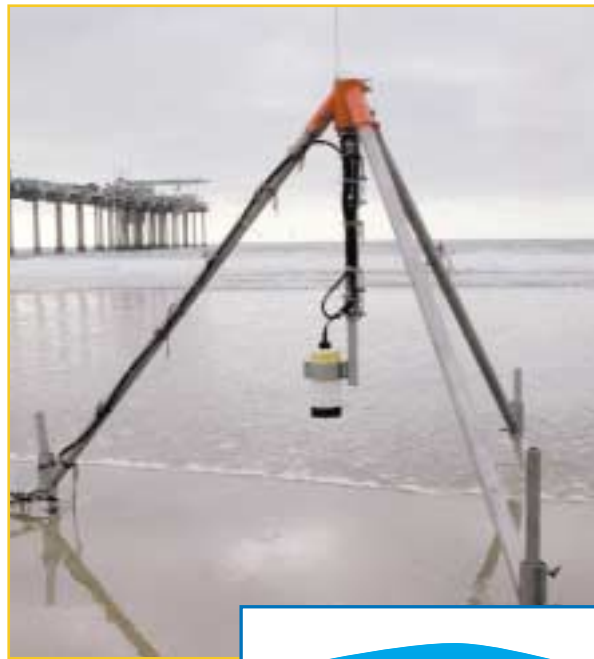
FOCUS on the DETAILS!

An ADP™ optimized for high-resolution, short-range, boundary layer studies. The PC-ADP (Pulse-Coherent Acoustic Doppler Profiler) combines the precision of the ADV™ (Acoustic Doppler Velicometer) with the profiling capability of an ADP. The exceptionally small mini-ADP probe results in a much lower flow disturbance than a standard ADP head.

FEATURES AND OPTIONS

- High Resolution Current Profiler for Boundary Layer Studies
- The Precision of Pulse Coherent Processing
- Acoustic Backscatter for Sediment Studies
- Three Beam Altimetry
- Directional Waves
- External Sensor Integration

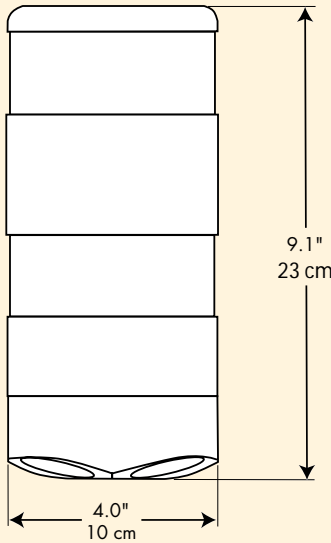
Surf-zone study at Scripps Institution of Oceanography.



Typical deployment illustration.

SPECIFICATIONS

Pulse-Coherent ADP



Mini-ADP Probe

Standard Features

- Pulse-coherent and standard pulse-incoherent operating modes
- Mini-ADP probe for reduced flow disturbance
- Transducer shading for minimal sidelobes
- Optimized transducer slant angle of 15° for near boundary measurements and higher resolvable horizontal velocities
- Recessed wet-mateable connector
- Temperature sensor
- Up to 100 range cells (the number of cells depend on user setup)
- Underwater canister, 128 MB recorder, batteries, and DSP electronics

Pulse-Coherent Mode

- Sampling rates up to 2 Hz
- Minimum vertical resolution: 1.6 cm
- Minimum blanking distance: 5 cm
- Maximum profiling range: 5 m for ± 0.3 m/s velocity range (Actual velocity range and maximum profiling range depend upon user-specified parameters. Please contact SonTek directly for details.)
- Maximum velocity range: ± 2.5 m/s for 0.5 m profiling range
- Velocity accuracy: $\pm 1\%$ of the velocity range, ± 0.1 cm/s
- Velocity resolution: 0.01 cm/s

Pulse-Incoherent Mode (Standard ADP)

- Sampling rates up to 1 Hz
- Minimum vertical resolution: 25 cm
- Minimum blanking distance: 40 cm
- Maximum profiling range: 10-14 m
- Velocity range: 10 m/s
- Velocity accuracy: $\pm 1\%$ of measured velocity, ± 0.5 cm/s
- Velocity resolution: 0.1 cm/s
- Optional bottom track and Surveyor software

Hardware options

- Internal recorder upgrade to 512 or 1024 MB
- Internal compass & two-axis tilt sensor
- Internal strain gauge pressure sensor (0.1% accuracy)
- Internal RPT pressure sensor (0.01% accuracy)

Windows Software

- ViewADP for post-processing
- SonUtils universal utility program
- CurrentMonitor for real-time data acquisition
- Optional ViewADPPro for directional wave spectra

External Sensor Options

- SeaBird SBE-37 MicroCat
- D&A OBS turbidity probe
- Paroscientific Digiquartz pressure sensor
- For other sensor interfaces, please contact SonTek

Power

- 1.0-2.0 W operating mode
- Less than 1 mW sleeping mode
- Total battery capacity (2 alkaline packs at 5° C): 1200 Wh
- 12-24 VDC optional external power

Compass/Tilt Sensor

- Resolution: Heading, Pitch, Roll 0.1°
- Accuracy: Heading $\pm 2^\circ$
- Accuracy: Pitch, Roll $\pm 1^\circ$

Environmental Specifications

- Operating Temperature: -5°C to 45°C
- Storage temperature: -10°C to 60°C
- Depth rating: 500m
- Probe weight – in air: 2.2 kg, in water: 0.8 kg
- Housing weight – in air: 20 kg, in water: 3.9 kg

GLOBAL HEADQUARTERS

SonTek/YSI Inc.

6837 Nancy Ridge Drive, Suite A
San Diego, CA 92121
Tel: (1) 858-546-8327
Fax: (1) 858-546-8150
inquiry@sontek.com
www.sontek.com

SonTek, ADP™ and ADV™ are trademarks of SonTek/YSI Inc., San Diego, CA USA.
The PC-ADP is made in the USA. • SonTek/YSI is an employee-owned company.
PC-ADP Bro. Rev. 9/03



The PC ADP is available with a wide range of external sensor options



A YSI Environmental Company

THE WORLD LEADER FOR WATER VELOCITY MEASUREMENT